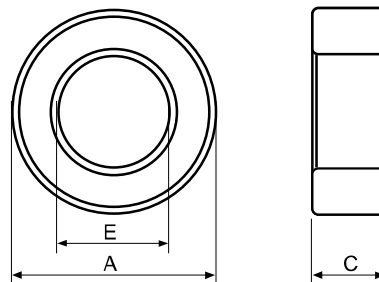


Type : T Cores

Ordering Code:

Shape:

A10	T2.5*1.5*1.3	HP	G□
Material	Core Size	Coating	Gapped AL Value



C : Epoxy Coating of Halogen-Free HUC : Epoxy Coating of UL & Halogen-Free
 HP : Parylene Coating of Halogen-Free W : Powder Coating of Halogen-Free

■ DIMENSIONS AND EFFECTIVE PARAMETERS

CORES	DIMENSIONS (mm)			EFFECTIVE PARAMETERS				
	PARYLENE COATING DIMENSIONS (mm)			C _i (mm ⁻¹)	Le(mm)	Ae(mm ²)	Ve(mm ³)	Wt(g/set)
A	E	C						
T2.03x1x1.4	2.03 ± 0.15	1.00 ± 0.15	1.40 ± 0.15	6.34	4.38	0.69	3.03	0.015
	2.03 ± 0.15	1.00 ± 0.15	1.40 ± 0.15					
T2.05x0.75x1.05	2.05 ± 0.15	0.75 ± 0.15	1.05 ± 0.15	5.95	3.74	0.63	2.36	0.010
	2.05 ± 0.15	0.75 ± 0.15	1.05 ± 0.15					
T2.5x1.5x1.3	2.50 ± 0.15	1.50 ± 0.15	1.30 ± 0.15	9.46	6.02	0.64	3.83	0.020
	2.50 ± 0.15	1.50 ± 0.15	1.30 ± 0.15					
T2.54x1.27x1.27	2.54 ± 0.15	1.27 ± 0.15	1.27 ± 0.15	7.14	5.53	0.77	4.29	0.022
	2.54 ± 0.15	1.27 ± 0.15	1.27 ± 0.15					
T2.57x1.5x1.3	2.57 ± 0.15	1.50 ± 0.15	1.30 ± 0.15	8.98	6.09	0.68	4.14	0.021
	2.57 ± 0.15	1.50 ± 0.15	1.30 ± 0.15					
T2.83x1.3x1.9	2.83 ± 0.13	1.30 ± 0.13	1.90 ± 0.13	4.25	5.88	1.38	8.12	0.044
	2.83 ± 0.13	1.30 ± 0.13	1.90 ± 0.13					
T2.9x1.5x1.7	2.90 ± 0.15	1.50 ± 0.15	1.70 ± 0.15	5.61	6.44	1.15	7.39	0.039
	2.90 ± 0.15	1.50 ± 0.15	1.70 ± 0.15					
T2.93x1.63x2.42	2.93 ± 0.15	1.63 ± 0.15	2.42 ± 0.15	4.43	6.77	1.53	10.35	0.049
	2.93 ± 0.15	1.63 ± 0.15	2.42 ± 0.15					
T3.05x1.27x2	3.05 ± 0.15	1.27 ± 0.15	2.00 ± 0.15	3.59	5.99	1.67	10.00	0.055
	3.05 ± 0.15	1.27 ± 0.15	2.00 ± 0.15					
T3.05x1.5x2.06	3.05 ± 0.15	1.50 ± 0.15	2.06 ± 0.15	4.30	6.58	1.53	10.08	0.053
	3.05 ± 0.15	1.50 ± 0.15	2.06 ± 0.15					
T3.05x1.68x2.06	3.05 ± 0.15	1.68 ± 0.15	2.06 ± 0.15	5.11	7.01	1.37	9.60	0.048
	3.05 ± 0.15	1.68 ± 0.15	2.06 ± 0.15					
T3.05x1.78x2.07	3.05 ± 0.15	1.78 ± 0.15	2.07 ± 0.15	5.64	7.23	1.28	9.28	0.048
	3.05 ± 0.15	1.78 ± 0.15	2.07 ± 0.15					
T3.25x1.4x0.78	3.25 ± 0.15	1.40 ± 0.15	0.78 ± 0.15	9.56	6.51	0.68	4.43	0.025
	3.25 ± 0.15	1.40 ± 0.15	0.78 ± 0.15					
T3.3x1.78x1.27	3.30 ± 0.15	1.78 ± 0.15	1.27 ± 0.15	8.01	7.49	0.94	7.01	0.037
	3.30 ± 0.15	1.78 ± 0.15	1.27 ± 0.15					
T3.3x2x2.2	3.30 ± 0.15	2.00 ± 0.15	2.20 ± 0.15	5.70	7.99	1.40	11.19	0.056
	3.30 ± 0.15	2.00 ± 0.15	2.20 ± 0.15					
T3.43x1.27x1.27	3.43 ± 0.15	1.27 ± 0.15	1.27 ± 0.15	4.98	6.29	1.26	7.96	0.048
	3.43 ± 0.15	1.27 ± 0.15	1.27 ± 0.15					
T3.43x1.78x1.78	3.43 ± 0.15	1.78 ± 0.15	1.78 ± 0.15	5.38	7.63	1.42	10.80	0.054
	3.43 ± 0.15	1.78 ± 0.15	1.78 ± 0.15					
T3.45x1.75x1.3	3.45 ± 0.15	1.75 ± 0.15	1.30 ± 0.15	7.12	7.57	1.06	8.05	0.042
	3.45 ± 0.15	1.75 ± 0.15	1.30 ± 0.15					
T3.45x1.78x2.2	3.45 ± 0.15	1.78 ± 0.15	2.20 ± 0.15	4.32	7.64	1.77	13.54	0.072
	3.45 ± 0.15	1.78 ± 0.15	2.20 ± 0.15					
T3.5x1.5x1.78	3.50 ± 0.15	1.50 ± 0.15	1.78 ± 0.15	4.17	6.99	1.68	11.72	0.068
	3.50 ± 0.15	1.50 ± 0.15	1.78 ± 0.15					
T3.5x1.78x1.78	3.50 ± 0.15	1.78 ± 0.15	1.78 ± 0.15	5.22	7.69	1.47	11.34	0.064
	3.50 ± 0.15	1.78 ± 0.15	1.78 ± 0.15					
T3.5x1.8x1.8	3.50 ± 0.15	1.80 ± 0.15	1.80 ± 0.15	5.25	7.74	1.47	11.42	0.050
	3.50 ± 0.15	1.80 ± 0.15	1.80 ± 0.15					

MANUFACTURING CAPABILITY

Gapped Toroid Sizes(OD)	2.50mm - 12.00mm
Height	0.70mm - 8.00mm
Gap Sizes :	0.03mm - 0.80mm
AL Tolerance	AL \pm 10%

APPLICATIONS

Power	DC-DC Converters Compact Power Transformer Small, Low Profile Power Inductors
Telecom	xDSL pass-band Filiterers Splitters EMI Inductors Filiter Inductors with Tight Tolerance

■ ELECTRICAL CHARACTERISTICS

CORES	AL \pm 25% (nH/N ²)							AL \pm 30% (nH/N ²)			
	P4	P47	P5	N42	A043	A05	A07	A10	A102	A121	A151
T2.03x1x1.4	470					950	1330	1900	2285	2285	2850
T2.05x0.75x1.05		635									
T2.5x1.5x1.3	330		260			650		1300	1300	1560	1950
T2.54x1.27x1.27	440			640	760	880	1230	1760	1760	1930	2540
T2.57x1.5x1.3								1370	1370		
T2.83x1.3x1.9	700										
T2.9x1.5x1.7					970						
T2.93x1.63x2.42	650		550		1240	1350	1900	2700	2700	3300	
T3.05x1.27x2	800		650			1600	2300	3250	3250	3900	
T3.05x1.5x2.06	700	840	560		1260	1400	1965	2810	2810	3370	4210
T3.05x1.68x2.06	600				1070	1190					3580
T3.05x1.78x2.07	500		400		980	1050	1500	2150	2150	2600	
T3.25x1.4x0.78					560						
T3.3x1.78x1.27					680						
T3.3x2x2.2					970	1080					
T3.43x1.27x1.27					1050						
T3.43x1.78x1.78	560			860	1015		1580				
T3.45x1.75x1.3	425		340		775	850	1190	1700	1700	2040	2550
T3.45x1.78x2.2					1265						
T3.5x1.5x1.78						1450					
T3.5x1.78x1.78								2320	2320		
T3.5x1.8x1.8	580			880		1150	1600	2300	2300	2700	3465

Remark:

1. AL Value Testing Condition : 10kHz, 50mV, 1Ts.

2. Coating Material

(1) Toroid Size T8 and Below:clear parylene coating, breakdown voltage:1000Vdc, coating thickness : 0.05mm max.

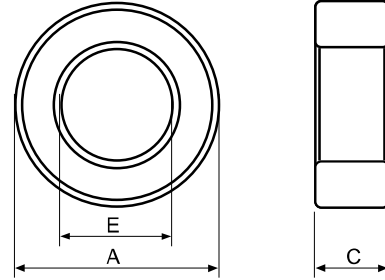
(2) Toroid Size T9 and Above:green epoxy coating, breakdown voltage:1500Vdc, coating thickness : 0.6mm max.

Type : T Cores

Ordering Code:

Shape:

A10	T3.68*1.65*2.54	HP	G□
Material	Core Size	Coating	Gapped AL Value



C : Epoxy Coating of Halogen-Free HUC : Epoxy Coating of UL & Halogen-Free
 HP : Parylene Coating of Halogen-Free W : Powder Coating of Halogen-Free

■ DIMENSIONS AND EFFECTIVE PARAMETERS

CORES	DIMENSIONS (mm)			EFFECTIVE PARAMETERS				
	PARYLENE COATING DIMENSIONS (mm)			C _i (mm ⁻¹)	Le(mm)	Ae(mm ²)	Ve(mm ³)	Wt(g/set)
A	E	C						
T3.68x1.65x2.54	3.68 ± 0.15	1.65 ± 0.15	2.54 ± 0.15	3.08	7.54	2.44	18.42	0.101
	3.68 ± 0.15	1.65 ± 0.15	2.54 ± 0.15					
T3.94x1.68x0.76	3.94 ± 0.15	1.68 ± 0.15	0.76 ± 0.15	9.70	7.84	0.81	6.34	0.033
	3.94 ± 0.15	1.68 ± 0.15	0.76 ± 0.15					
T3.94x1.78x1.27	3.94 ± 0.15	1.78 ± 0.15	1.27 ± 0.15	6.23	8.10	1.30	10.53	0.056
	3.94 ± 0.15	1.78 ± 0.15	1.27 ± 0.15					
T3.94x2.24x1.27	3.94 ± 0.15	2.24 ± 0.15	1.27 ± 0.15	8.76	9.21	1.05	9.68	0.050
	3.94 ± 0.15	2.24 ± 0.15	1.27 ± 0.15					
T3.94x2.24x2.54	3.94 ± 0.15	2.24 ± 0.15	2.54 ± 0.15	4.38	9.21	2.10	19.36	0.090
	3.94 ± 0.15	2.24 ± 0.15	2.54 ± 0.15					
T3.95x2.5x2.5	3.95 ± 0.20	2.50 ± 0.20	2.50 ± 0.20	5.49	9.79	1.78	17.43	0.080
	3.95 ± 0.20	2.50 ± 0.20	2.50 ± 0.20					
T4x2x2	4.00 ± 0.20	2.00 ± 0.20	2.00 ± 0.20	4.53	8.71	1.92	16.74	0.099
	4.00 ± 0.20	2.00 ± 0.20	2.00 ± 0.20					
T4x2x2.54	4.00 ± 0.20	2.00 ± 0.20	2.54 ± 0.20	3.57	8.71	2.44	21.26	0.130
	4.00 ± 0.20	2.00 ± 0.20	2.54 ± 0.20					
T4x2.2x1.6	4.00 ± 0.20	2.20 ± 0.20	1.60 ± 0.20	6.57	9.18	1.40	12.84	0.069
	4.00 ± 0.20	2.20 ± 0.20	1.60 ± 0.20					
T4x2.3x2	4.00 ± 0.15	2.30 ± 0.15	2.00 ± 0.15	5.68	9.41	1.66	15.59	0.084
	4.00 ± 0.15	2.30 ± 0.15	2.00 ± 0.15					
T4x2.4x1.6	4.00 ± 0.20	2.40 ± 0.15	1.60 ± 0.15	7.69	9.63	1.25	12.06	0.063
	4.00 ± 0.20	2.40 ± 0.15	1.60 ± 0.15					
T4.2x1.5x2	4.20 ± 0.20	1.50 ± 0.20	2.00 ± 0.20	3.06	7.55	2.47	18.67	0.120
	4.20 ± 0.20	1.50 ± 0.20	2.00 ± 0.20					
T4.3x1.27x0.76	4.30 ± 0.15	1.27 ± 0.15	0.76 ± 0.15	6.78	6.91	1.02	7.03	0.048
	4.30 ± 0.15	1.27 ± 0.15	0.76 ± 0.15					
T4.3x2.1x1.75	4.30 ± 0.20	2.10 ± 0.20	1.75 ± 0.20	5.01	9.24	1.84	17.05	0.090
	4.30 ± 0.20	2.10 ± 0.20	1.75 ± 0.20					
T4.3x2.8x2.5	4.30 ± 0.20	2.80 ± 0.30	2.50 ± 0.20	5.86	10.82	1.85	19.98	0.106
	4.30 ± 0.20	2.80 ± 0.30	2.50 ± 0.20					
T4.4x1.78x0.76	4.40 ± 0.20	1.78 ± 0.20	0.76 ± 0.20	9.14	8.50	0.93	7.91	0.045
	4.40 ± 0.20	1.78 ± 0.20	0.76 ± 0.20					
T4.5x2x3.3	4.50 ± 0.15	2.00 ± 0.15	3.30 ± 0.15	2.35	9.17	3.91	35.83	0.204
	4.50 ± 0.15	2.00 ± 0.15	3.30 ± 0.15					
T4.5x2.7x1.3	4.50 ± 0.20	2.70 ± 0.20	1.30 ± 0.20	9.46	10.83	1.14	12.40	0.065
	4.50 ± 0.20	2.70 ± 0.20	1.30 ± 0.20					
T4.83x2.29x2.54	4.83 ± 0.12	2.29 ± 0.15	2.54 ± 0.12	3.31	10.21	3.08	31.45	0.180
	4.83 ± 0.12	2.29 ± 0.15	2.54 ± 0.12					
T4.95x1.55x2.84	4.95 ± 0.20	1.55 ± 0.20	2.84 ± 0.20	1.91	8.23	4.32	35.56	0.230
	4.95 ± 0.20	1.55 ± 0.20	2.84 ± 0.20					
T5x3x3.1	5.00 ± 0.15	3.00 ± 0.15	3.10 ± 0.15	3.97	12.04	3.03	36.51	0.090
	5.00 ± 0.15	3.00 ± 0.15	3.10 ± 0.15					
T5.05x1.78x0.85	5.05 ± 0.20	1.78 ± 0.20	0.85 ± 0.20	7.09	9.01	1.27	11.44	0.069
	5.05 ± 0.20	1.78 ± 0.20	0.85 ± 0.20					
T5.05x2.42x1	5.05 ± 0.20	2.42 ± 0.18	1.00 ± 0.18	8.54	10.74	1.26	13.50	0.072
	5.05 ± 0.20	2.42 ± 0.18	1.00 ± 0.18					
T5.08x1.3x3.23	5.08 ± 0.15	1.30 ± 0.15	3.23 ± 0.15	1.43	7.48	5.24	39.21	0.297
	5.08 ± 0.15	1.30 ± 0.15	3.23 ± 0.15					

MANUFACTURING CAPABILITY

Gapped Toroid Sizes(OD)	2.50mm - 12.00mm
Height	0.70mm - 8.00mm
Gap Sizes :	0.03mm - 0.80mm
AL Tolerance	AL \pm 10%

APPLICATIONS

Power	DC-DC Converters Compact Power Transformer Small, Low Profile Power Inductors
Telecom	xDSL pass-band Filiterers Splitters EMI Inductors Filer Inductors with Tight Tolerance

■ ELECTRICAL CHARACTERISTICS

CORES	AL \pm 25% (nH/N ²)							AL \pm 30% (nH/N ²)			
	P4	P47	P5	N42	A043	A05	A07	A10	A102	A121	A151
T3.68x1.65x2.54					1740	1935					
T3.94x1.68x0.76	300	360			550	600	830	1200	1200	1400	1830
T3.94x1.78x1.27						960	1340	1900	2300	2300	2870
T3.94x2.24x1.27	350	420				690	980	1400	1400	1670	2100
T3.94x2.24x2.54	740		560		1260	1475	2065	2950	2950	3350	4195
T3.95x2.5x2.5											3120
T4x2x2	640	800	530	1010	1200	1400	2000	2500	2500	3200	4000
T4x2x2.54	880	1050		1290	1530	1760	2460	3520	3520	3050min	5080
T4x2.2x1.6	460	550	380			930		1850	1850		2790
T4x2.3x2											3325
T4x2.4x1.6	400		320	610	720	800	1120	1600	1600	1920	2400
T4.2x1.5x2		1235									
T4.3x1.27x0.76						825					
T4.3x2.1x1.75	600	720	450	915		1200	1650	2400	2400	2850	
T4.3x2.8x2.5	530	640	420			1050	1480	2100	2100		3170
T4.4x1.78x0.76	300		250			600	900	1250	1250	1500	
T4.5x2x3.3					2280						
T4.5x2.7x1.3	325	390	260		550	650	910	1300	1300		
T4.83x2.29x2.54	950	1090	720	1380		1900	2660	3800	3800	4350	
T4.95x1.55x2.84							4100	5900	5900		
T5x3x3.1	770	930	620			1550	2170	3000		3700	4600
T5.05x1.78x0.85	400		300			800	1100	1600	1600	1900	2440
T5.05x2.42x1	350		280					1410	1410		
T5.08x1.3x3.23	1910										

Remark:

- AL Value Testing Condition : 10kHz, 50mV, 1Ts.
- Coating Material
 - Toroid Size T8 and Below:clear parylene coating, breakdown voltage:1000Vdc, coating thickness : 0.05mm max.
 - Toroid Size T9 and Above:green epoxy coating, breakdown voltage:1500Vdc, coating thickness : 0.6mm max.